



LayerGauge SAMPLE SPECIFICATION FORM

1. Company

2. Contact Person

3. Phone/E-mail

4. Sample No. # / Code

5. Manufacturing Date

6. Processing Method

Blown / Cast / Coated / Laminated

7. Layer Specification

No. #	Material	Thickness	R.I.	Notes
Surface "A", 1	_____	_____	_____	_____
2	_____	_____	_____	_____
3	_____	_____	_____	_____
4	_____	_____	_____	_____
5	_____	_____	_____	_____
6	_____	_____	_____	_____
7	_____	_____	_____	_____
8	_____	_____	_____	_____
9	_____	_____	_____	_____
10	_____	_____	_____	_____
TOTAL	_____	_____	_____	_____

8. Remarks

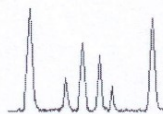
9. Instructions

1. Fill in the **Contact Information** section or attach your business card.
2. Identify the sample by **Sample No. #** or **Code**. Please also mark the **Processing Method** and **Manufacturing Date** (or week, or month) if known.
3. Fill in the **Layer Specification** section by specifying the layer **Material** (e.g. PE-LD, PA, EVOH, Adhesive, ...) and nominal/expected **Thickness** of each individual layer. Mark additional **Notes**, e.g. pigmentation (colors) or other special additives used in some particular layer if applicable. Specify the **Refractive Index** if known.
4. Use the **Remarks** section to write down special requirements/instructions regarding the sample if necessary.
5. Mark the actual sample with the same **Code or Sample No. #** used above and **specify the Surface "A"** by a piece of adhesive tape or other label.
6. Prepare the sample stripes. Some 3...5 stripes are recommended. Fill in this specification sheet for each sample

NOTE I: The ideal sample size is a stripe with width of approx. 40-50 mm (1.5 - 2"). Cutting the sample stripes **across the line direction** is recommended.

NOTE II: The sample material could be delivered also as a sheet. Davinor will prepare the stripes prior to analysis.

Send to: **Davinor Ltd**



Attn: Juha-Pekka Repo
**Asesepänkuja 3,
00620 HELSINKI, Finland**

or

**P.O.Box 3
00621 HELSINKI, Finland**